

NEWERA STEEL STRUCTURE COMPANY PROFILE



التاريخ الحدي للصناعات المعدنية
NEW ERA STEEL STRUCTURE



CR : 7002184146
SAUDI ARABIA - JEDDAH
FACTORY : FIRST INDUSTRIAL CITY 1 , ZONE 5 .

NEWERA MANAGEMENT TEAM



President

YASER NAGHI



VP

OSAMA SERAFI



CEO

HOSSAM SALIH



Managing Director

IBRAHIM ABDELQADER



Deputy GM

MOHAMMED SERAFI



Financial Head

HAZEM ISSA



Factory Manager

ALAA ALI



Projects Head

MOSTAFA MUHAMMED



Engineer Head

MAHMOOD FATHY



Estimation And Planning

AHMED BASYOUNI



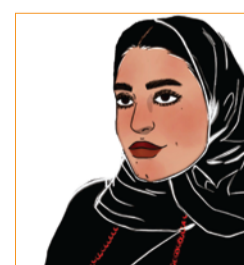
Sales Head

REHAB MOURSY



Interior Designer

MANAR ALZHRANI



Message from the CEO

New Era Steel Structure is a premier manufacturing company specializing in steel fabrication and new construction technology. Our core expertise lies in the fabrication of steel structures, where we excel in providing tailored solutions to our clients. Through years of experience and continuous innovation, we have mastered the art of steel fabrication, ensuring that our services meet the highest standards of quality and precision.



The rapid pace of change we are seeing today in Saudi Arabia and the global economy and the many challenges we are facing allowed us to see it as business opportunity to provide the people with the most advanced environment friendly construction work. We remain firm in our commitment to keep use the most advance technology and formulating innovative unique proposals for our company.

In addition to fulfilling our social responsibilities our employees continue to focus all of our corporate resources to provide professional services to meet our client needs. To that end, we would like to ask for your continued support and patronage to help us serve all our clients.

Location

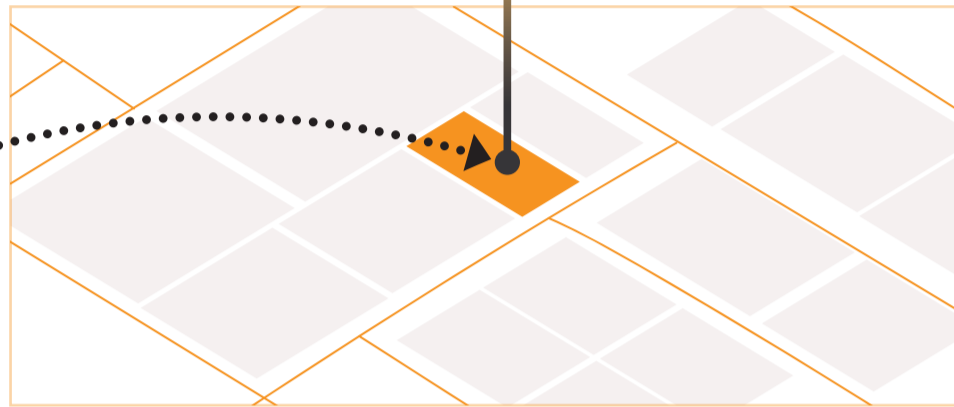


**NEWERA STEEL
STRUCTURE
FACTORY**

04

03

**INDUSRTIAL 1
ZONE 5**

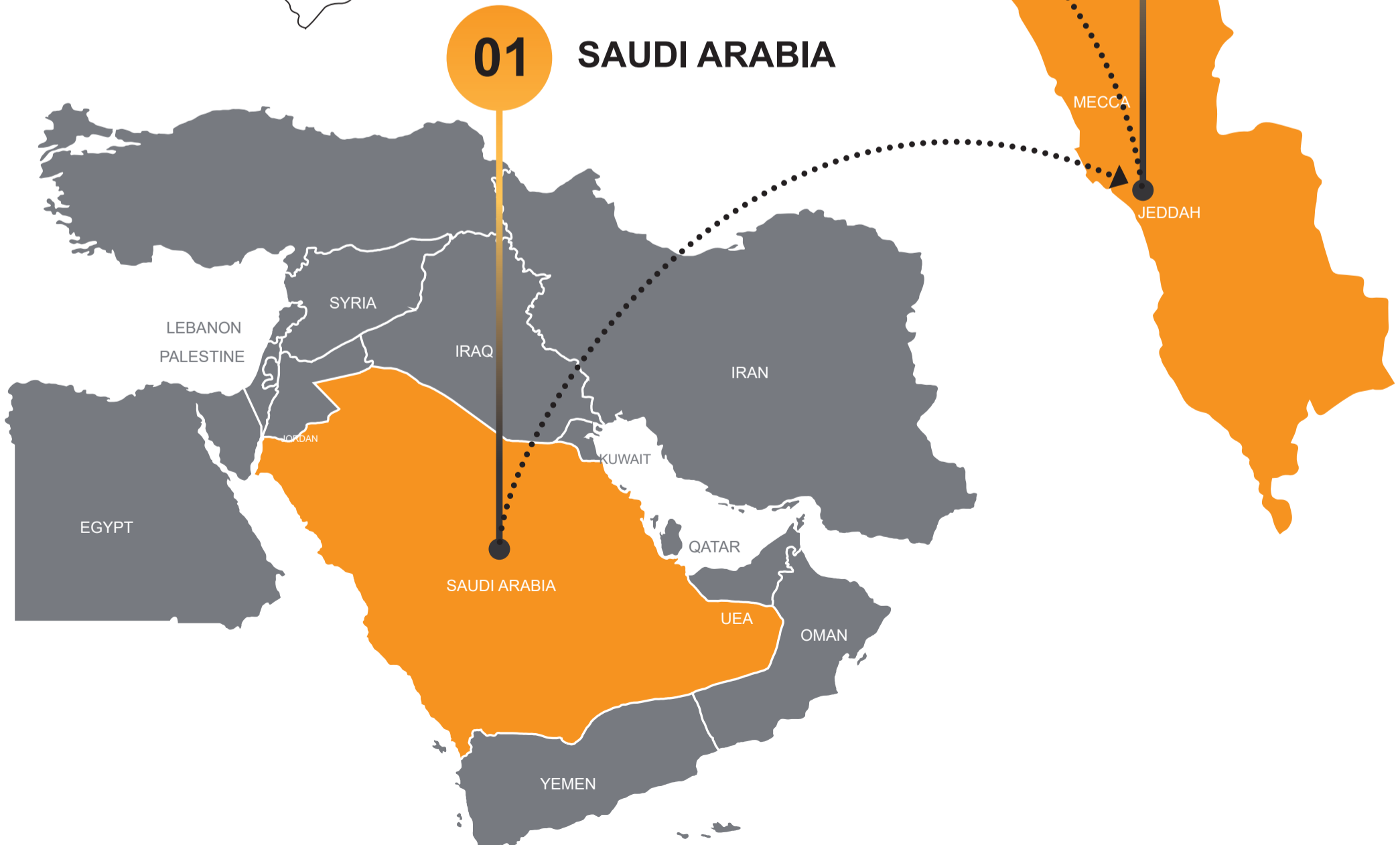


02

JEDDAH

01

SAUDI ARABIA



Vision



As a premier steel construction company, we envision a future where our structures epitomize the fusion of strength, sustainability, and timeless elegance. With an unwavering commitment to engineering excellence. Our vision extends beyond construction, delving into sustainable innovation and architectural legacy. Each project is a testament to our dedication to shaping a future built on enduring strength, environmental responsibility, and unparalleled aesthetic allure.

Mission

(Forging Excellence, Building Tomorrow: Your Vision, Our Steel craft)

At New Era, we are dedicated to surpassing the ordinary in steel structure construction by fearlessly addressing the most formidable challenges and constraints in the industry .our unwavering mission is to provide our customers with cutting-edge,sustainable ,aesthetically pleasing and environmentally conscious solutions and buildings. We are committed to helping them realize their aspiration and shape a brighter future.



Safety Statement



New Era Steel Structure is deeply committed to ensuring the safety and well-being of our workforce, clients, and stakeholders. We maintain rigorous safety protocols that comply with industry standards and regulations. Our team undergoes regular safety training and is equipped with the latest safety gear and equipment to mitigate workplace hazards effectively. We conduct thorough risk assessments before each project and implement proactive measures to prevent accidents or injuries. Our commitment to safety is reflected in our open communication channels, where employees are encouraged to report any safety concerns or incidents promptly. Through continuous improvement initiatives, we strive to create a culture of safety excellence that extends to every aspect of our operations.

Core Value

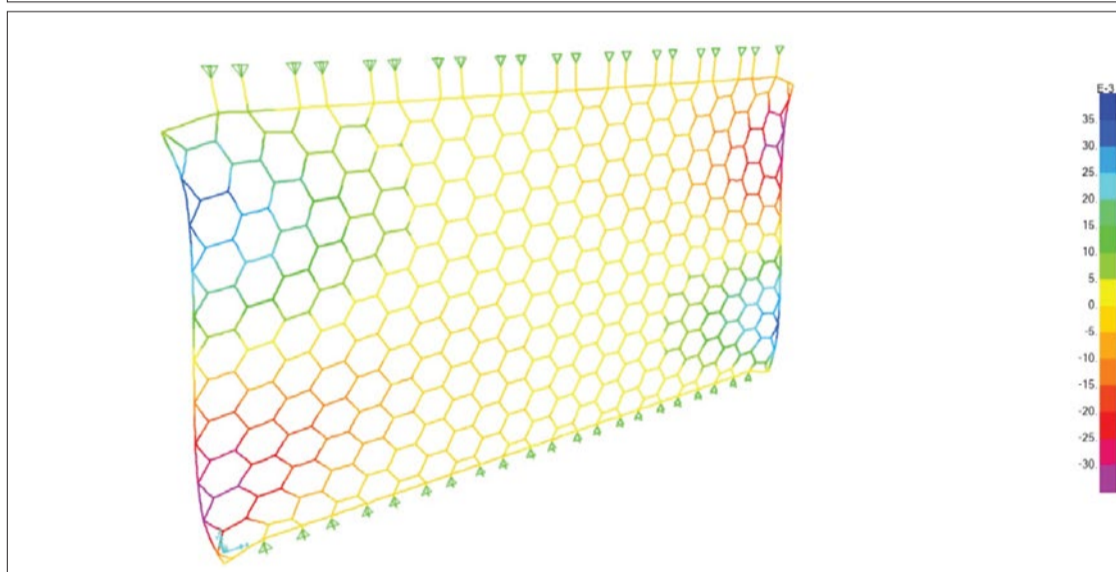
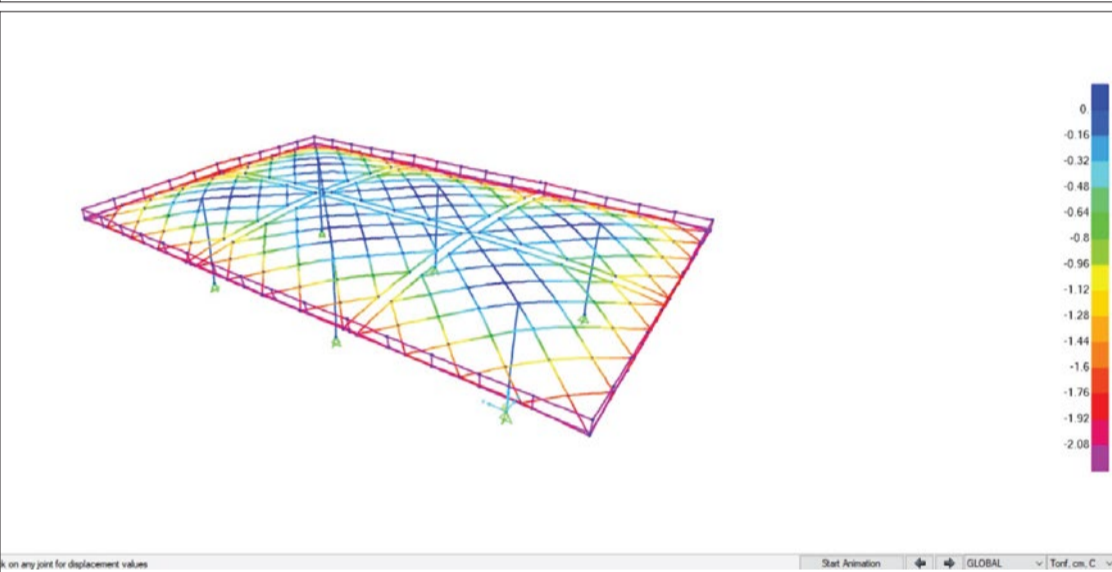
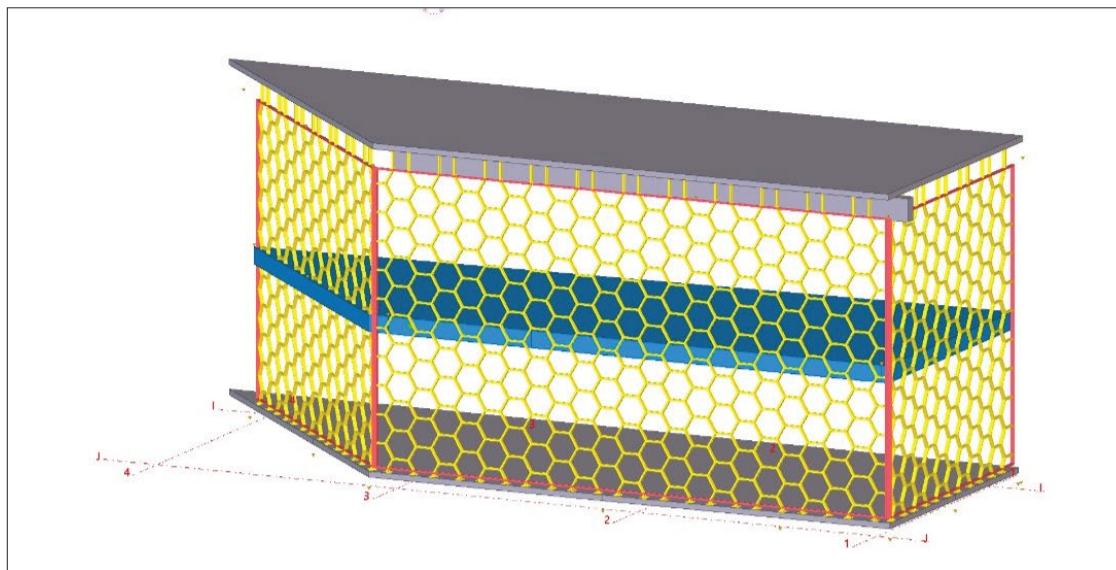
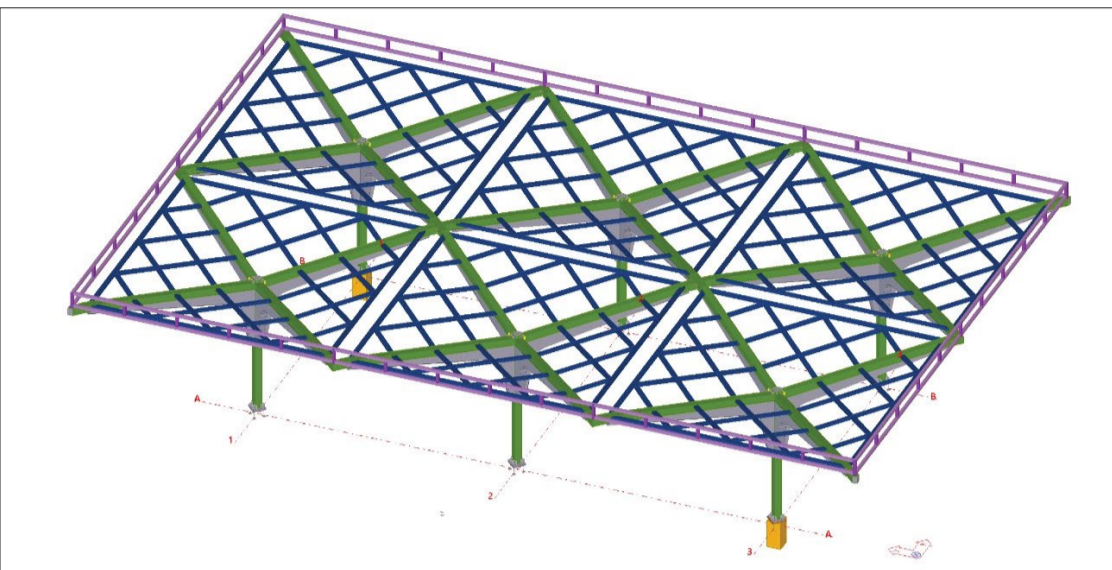


Key Strengths



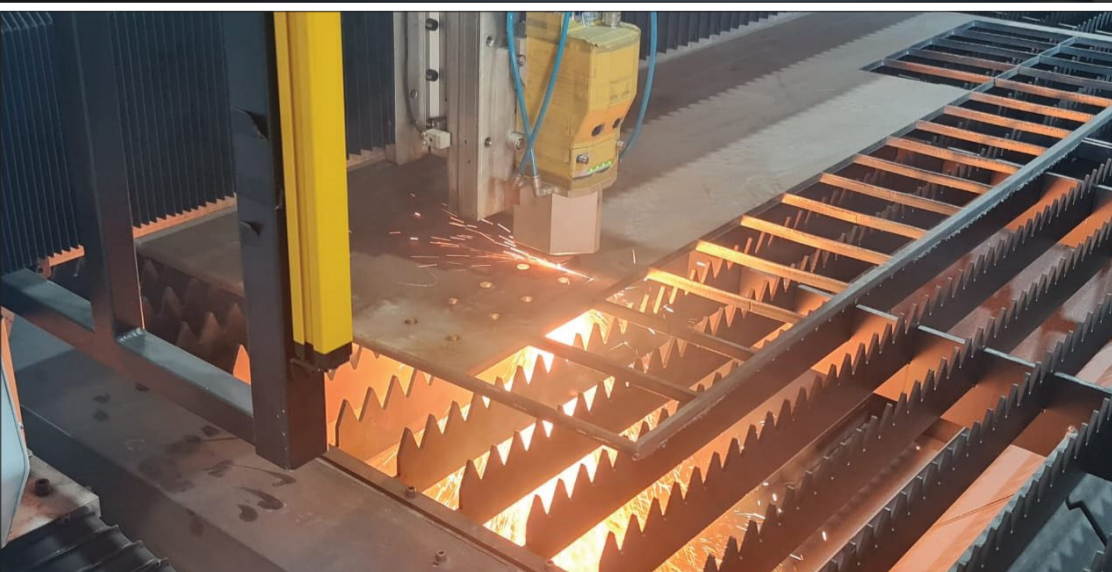
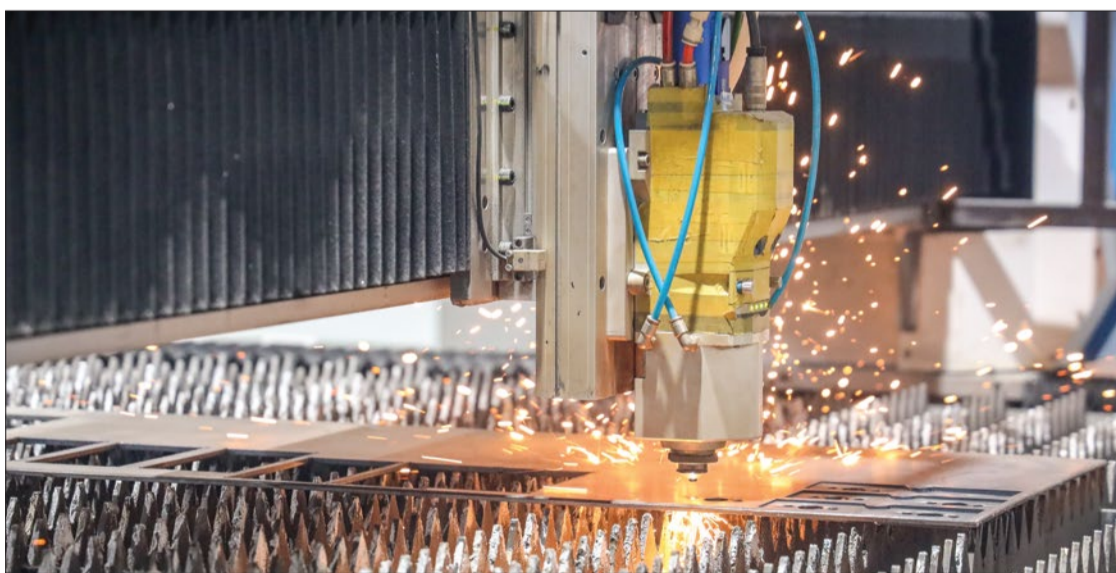
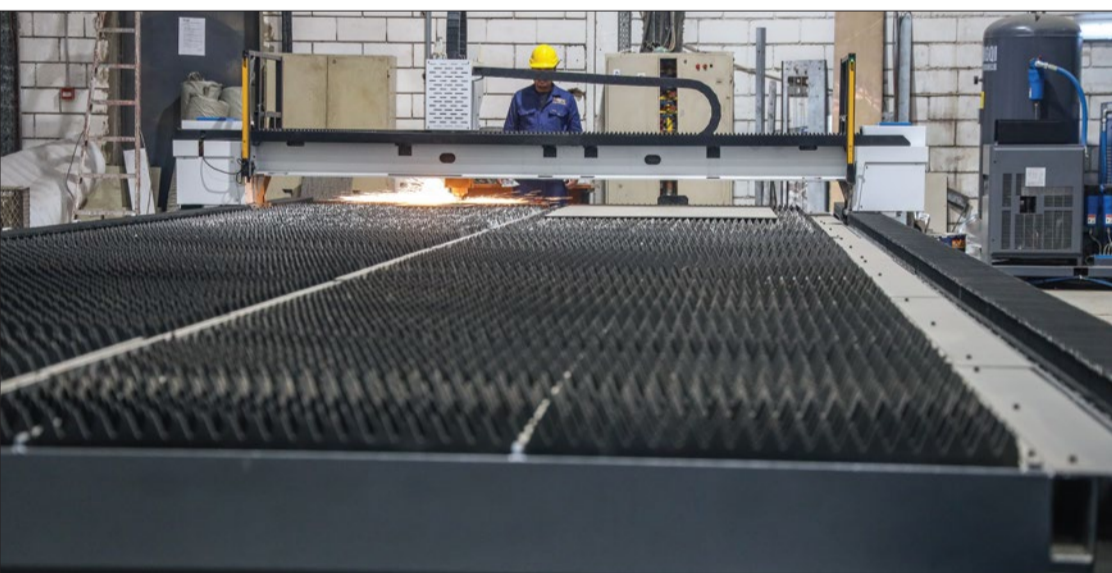
Advanced Technology Integration

- Leveraging Tekla, MBS, Sap2000, Staad-up pro, Ram Connection, Lemicon, Idea Statica, Frame Cad, and Autocad for 3D modeling, detailed fabrication plans, and assembly drawings with unmatched accuracy.



• CNC Machines Capabilities

- Utilization of cutting-edge CNC machines for precision cutting and machining.
- Enhanced fabrication capabilities, allowing for intricate and complex designs with high repeatability.



Key Strengths



Customized Solutions

- A team of highly skilled engineers collaborates closely with clients to provide tailor-made solutions for varying project scopes.



Comprehensive Project Management

- Robust project management methodologies ensure seamless project delivery, emphasizing efficient resource allocation, risk management, and adherence to project timelines.



Key Strengths



Quality Assurance and Compliance

- Stringent quality control measures, including non-destructive testing (NDT), guarantee the durability and reliability of our fabricated products.



In-House Expertise

- A dedicated team of professionals, including structural engineers, fabricators, welders, and project managers, work collaboratively under one roof, facilitating streamlined communication and cohesive project execution.



Material Excellence

- Strategic partnerships with reputable suppliers ensure top-quality materials, meeting and often exceeding client specifications.



Safety First Approach

- Prioritizing the safety and well-being of our team and clients through stringent safety protocols during both fabrication processes and on-site installations.



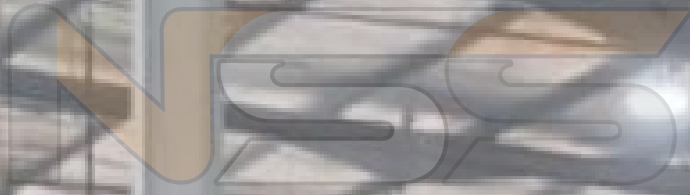


MACHINES

List of our machines resources

Machines





PRODUCTS

List of our products resources

1

HOT ROLLED STEEL STRUCTURES: These are structural components such as beams, columns, and frames fabricated from hot rolled steel sections. Hot rolling involves heating Steel above its recrystallization temperature and then shaping it into various forms.

- Pipe packs.
- Main steel building.
- Tanks.
- Pressure vessels.
- Plate work.
- Silo.
- Pipe work.
- Strusses.
- Bridges.

2

MISCELLANEOUS: Structural components like beams and columns made from hot-rolled steel, shaped by heating and forming.

- Stair cases.
- Ladders.
- Handrails.
- Gratings.
- Chackerd plate.
- Elvators frame.
- Shaft frame.
- Walk way.

3

PRE-ENGINEERED BUILDINGS (PEB): PEBs are custom-designed steel buildings that are fabricated off-site and then assembled on-site. They offer cost-effective and efficient solutions for industrial, commercial, and agricultural buildings.

- Hangers.
- Warehouses.
- Halls.
- Built up section.
- Sheetirs.
- Sandwich panel.

4

LGS : are custom steel buildings made off-site and assembled on-site, offering cost-effective solutions for industrial, commercial, and agricultural use .

Shops.

Villas.

Porta cabins .

Prefab houses.

Food trucks.

Kiosk.



PRPROJECT PORTFOLIO

Our diverse portfolio showcases our versatility and expertise across a spectrum of industries, including but not limited to Construction, Energy, Infrastructure, and Architecture. Notable projects include highlighting our ability to tackle complex challenges with finesse.

SAUDI ALUMINUM FACTORY

2024

Saudi Aluminum Factory 3rd Industrial City Full Scop
(Contracting Civil. Steel , Mep ,Sheeting, Finishing etc.. Supply & Execution)

Project Tonnage: 750 Ton .

Project Status : Running .



APSCO PETROL STATION

2023

Apsco Petrol Station Project King Road
Steel Structure Supply , Installation

Project Tonnage: 200 Ton.

Project Status : Completed.



KING'S COLLEGE HOSPITAL

2023

king's College Hospital Jeddah
Steel Structure Hexagon, Skylights ,Canopy Supply , Installation.

Project Tonnage: 110 Ton.

Project Status : Completed.



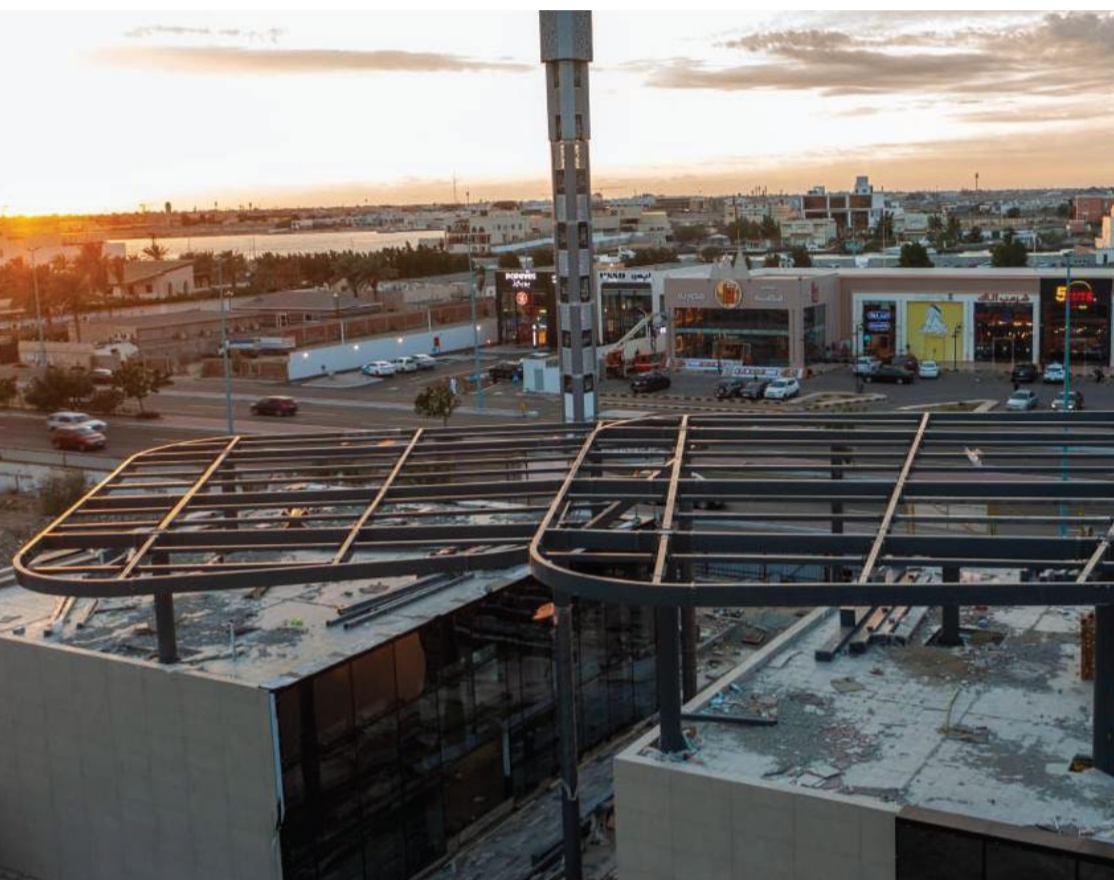
BARNS COFFEE

2023

Barn's Coffee Shop South Obhur Jeddah
steel Canopy supply ,installation

Project Tonnage: 48 TON.

Project Status : Completed.



MAKKAH CITY CENTER

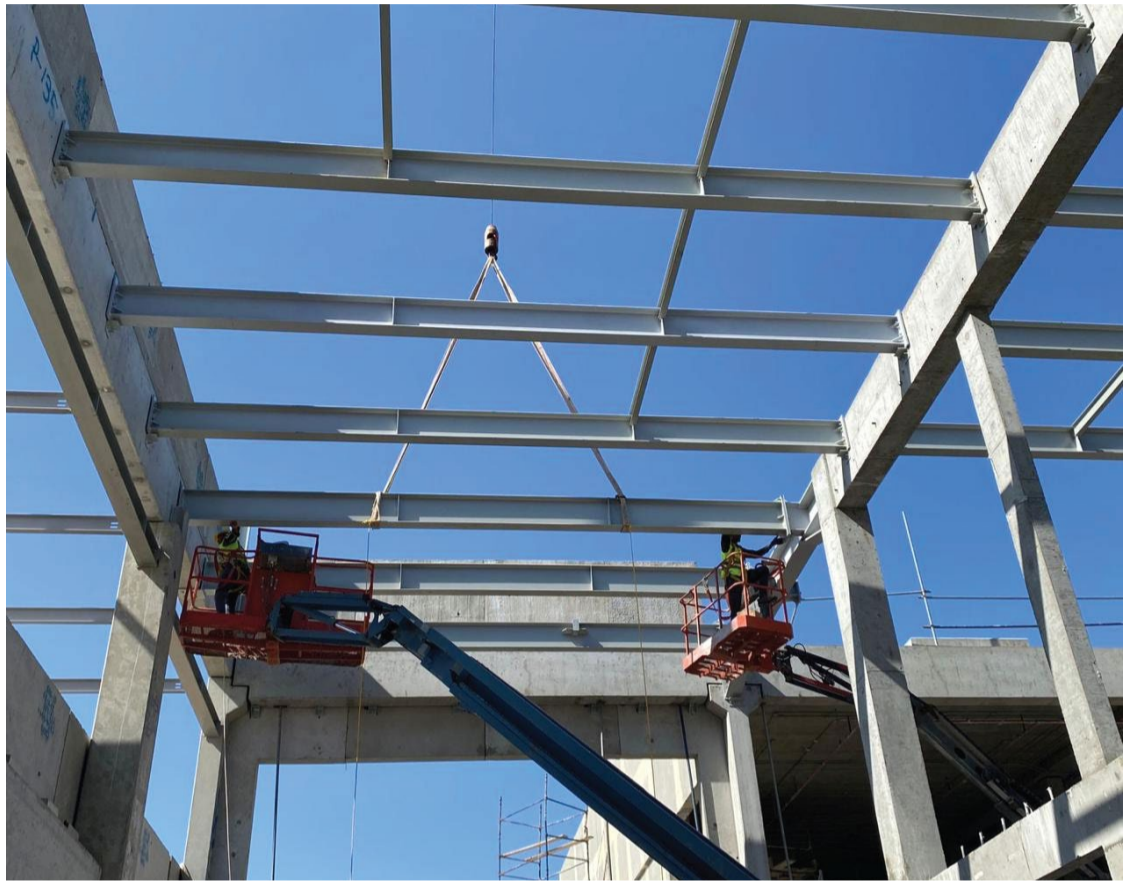
2023

Zuhaier A.Zahran in makkah

Steel structure including metal decking & sandwich panel supply ,installation

Project Tonnage: 58 TON.

Project Status : Completed.



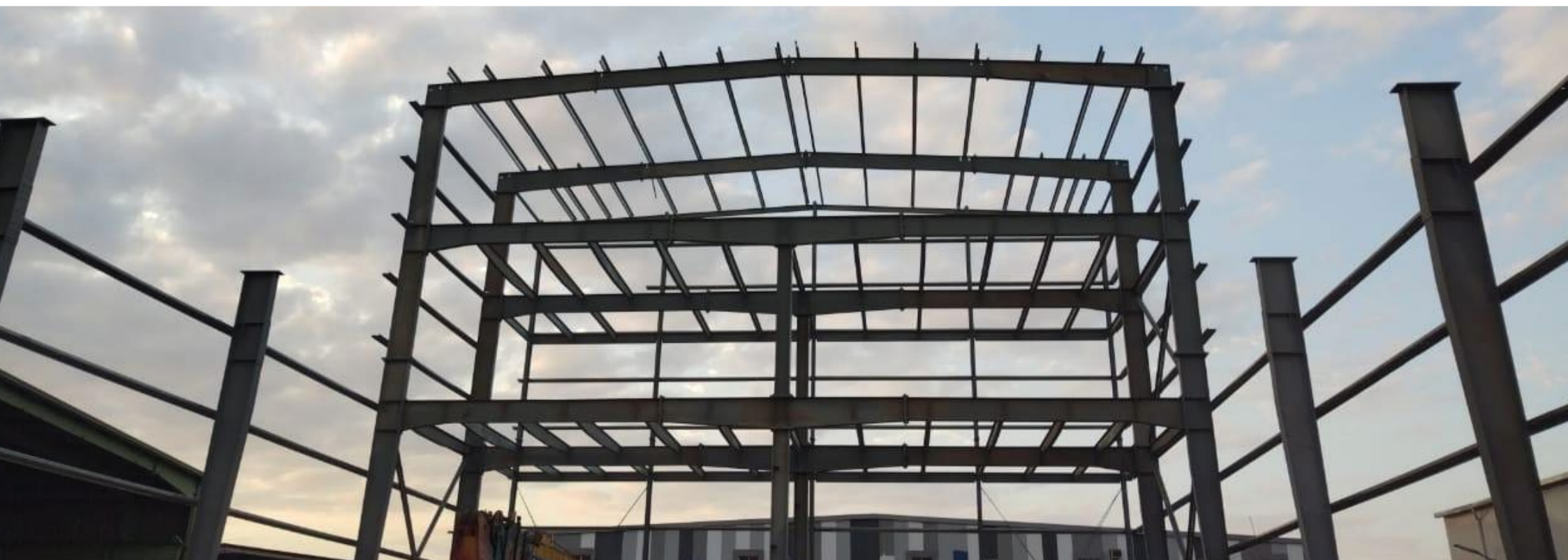
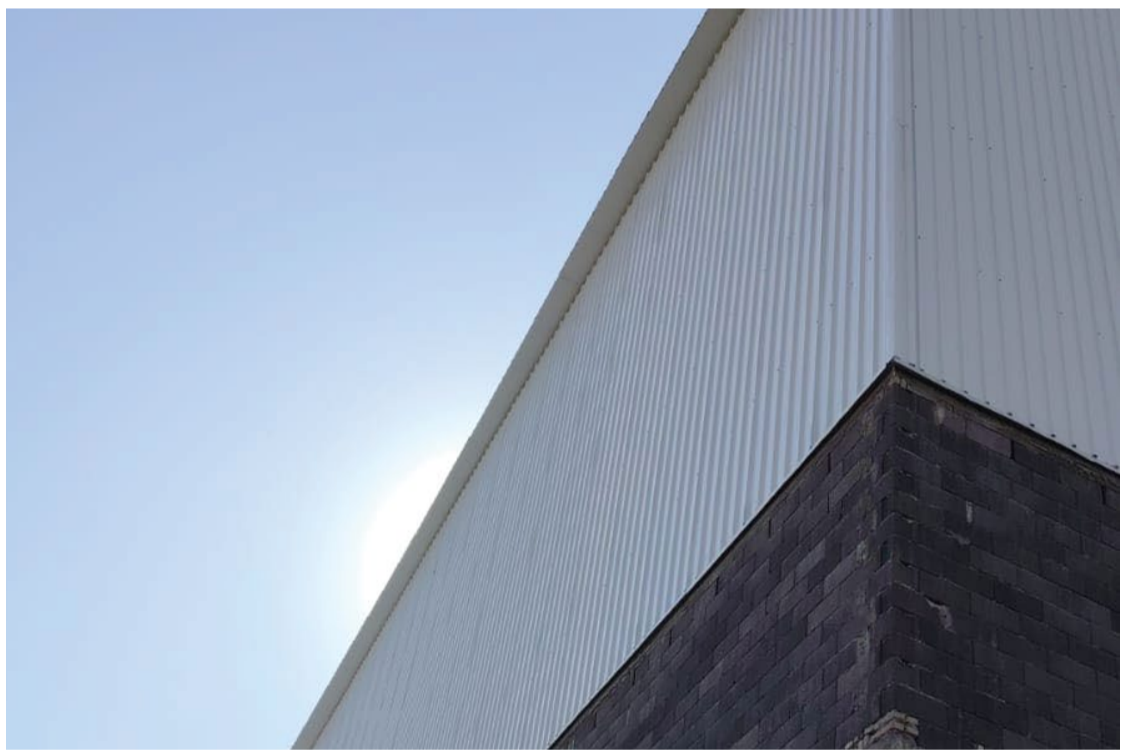
CIGALAH MEDICAL WAREHOUSE

2023

Cigalah Medical Factory 1 First Industrial City
Steel structure including sheeting & sandwich panel supply ,installation

Project Tonnage : 1750 Ton Free Height 18 M.

Project Status : Completed.

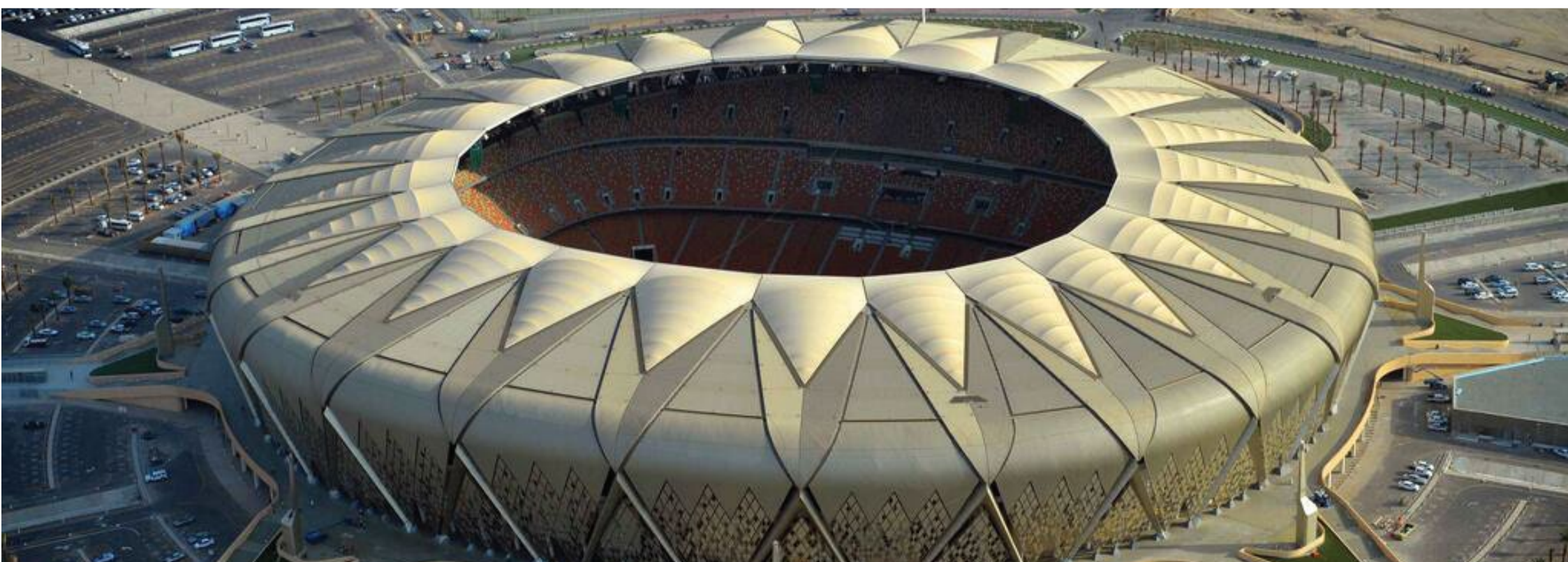


AL-JAWHRA STADIUM

2022

Aljawhra Stadium
Steel Structure ,Installation

Project Tonnage: 280 TON.
Project Status : Completed.



BOTANIC

2022

Oman Botanic
Steel Structure ,Installation

Project Tonnage: 5,000 TON.
Project Status : Completed.



ZAHRA MALL

2021

Zahraa Comercial Center
Steel Structure Supply ,Installation

Project Tonnage : 200 Ton.

Project Status : Completed.



King Road National Bank Canopy Project
Steel Structure Supply & Installation.

Project Tonnage: 150 TON.

Project Status : Completed.



CIGALAH 1 MEDICAL FACTORY

2020

Cigalah Medical Factory 1 First Industrial City
Steel Structure Including Sheeting & Sandwich Panel Supply ,Installation

Project Tonnage : 1750 Ton.

Project Status : Completed.



CIGALAH 2ND MEDICAL FACTORY

2020

Cigalah Medical Factory 2 First Industrial City
Steel Structure Including Sheeting & Sandwich Panel Supply ,Installation

Project Tonnage : 1750 Ton.

Project Status : Completed.



Project Portfolio Our diverse portfolio showcases our versatility and expertise across a spectrum of industries, including but not limited to Construction, Energy, Infrastructure, and Architecture. Notable projects include [List a few exemplary projects], highlighting our ability to tackle complex challenges with finesse.

Client-Centric Approach Our success is rooted in understanding and exceeding client expectations. We foster open communication, uphold transparency throughout projects, and tailor our services to meet the specific needs of each client. Collaborative partnerships with clients ensure a thorough understanding of their vision, allowing us to bring it to fruition seamlessly.

Environmental Responsibility As stewards of the environment, we integrate eco-friendly practices into our fabrication processes. From sustainable material selection to responsible waste management, we strive to minimize our environmental footprint and contribute to a greener future.

Certifications and Accreditation New Era Steel Structure proudly holds industry certifications and accreditations, attesting to our commitment to quality and compliance. This includes [List relevant certifications], demonstrating our adherence to the highest standards in steel fabrication.

Employee Development and Training Investing in our team's continuous development is a cornerstone of our success. We provide ongoing training programs, ensuring our workforce stays abreast of industry advancements and maintains the highest level of expertise.

Methodology



Our comprehensive methodology ensures the successful execution of every project

Project Initiation

- Comprehensive consultation with clients to understand project goals and requirements.
- Feasibility studies and cost estimation to align project scope with budget constraints.
- Collaborative planning with clients to establish project objectives and key performance indicators.

1

2

Design and Engineering

- Utilization of advanced 3D modeling software for precise design and visualization.
- Collaboration with architects and engineers to optimize designs for fabrication efficiency.
- Development of detailed fabrication plans, assembly drawings, and design reviews with clients.

3

Fabrication Process

- Set-up of a well-equipped fabrication workshop with advanced machinery.
 - Assignment of skilled personnel for cutting, welding, and assembly.
 - CNC Machines Integration
- Incorporation of CNC machines for precise cutting, shaping, and machining of materials.
- Enhanced capabilities for intricate and complex designs with high precision.

4

Quality Assurance and Inspection

- Regular inspections at various fabrication stages with detailed documentation.
- Rigorous quality control processes and adherence to international standards.
- Prompt addressing of any identified issues to maintain project integrity.

5

Site Erection and Installation

- Mobilization of a qualified on-site team for erection activities.
- Coordination with subcontractors if necessary, with adherence to health and safety regulations.
- Final inspections to ensure compliance with design specifications.

6

Client Communication and Approval

- Regular updates on project progress, including milestone achievements.
- Sharing of inspection reports, quality assurance documentation, and test results.
- Facilitation of open communication channels for feedback and obtaining client approval upon successful project completion.

7

Continuous Improvement and Learning

- Regular internal and external training programs to enhance skills and knowledge.
- Establishment of feedback loops for employees to contribute ideas for process improvement.
- Continuous monitoring of industry advancements and adoption of best practices.

8

Health and Safety Measures

- Development and implementation of a comprehensive Health and Safety Policy.
- Regular training on the proper use of equipment, machinery, and personal protective gear.
- Periodic health and safety audits to identify and rectify potential hazards promptly.
- Immediate reporting and investigation of incidents to prevent future occurrences.

Code Of Conduct



At New Era Steel Structure, we hold ourselves to the highest standards of professionalism, ethics, and safety. Our code of conduct is a testament to our commitment to excellence in every aspect of our operations.

1. Integrity

- Upholding the highest ethical standards in all business dealings.
- Transparency in communication with clients, partners, and stakeholders.
- Honoring commitments and delivering on promises with honesty and accountability.

2. Safety and Well-being

- **Health and Safety Measures**
 - Implementation of a robust Health and Safety Policy, conforming to industry standards.
 - Regular training sessions for all personnel on safety procedures and emergency protocols.
- Routine safety audits and inspections to identify and address potential hazards.
 - Provision of personal protective equipment (PPE) and ensuring its proper usage.
- **Emergency Response**
 - Clearly defined emergency response procedures communicated to all employees.
 - Regular drills to ensure preparedness for various emergency scenarios.
 - Prompt reporting and investigation of any incidents to prevent recurrence

3. Quality Excellence

- Commitment to delivering products and services that surpass industry benchmarks.
- Continuous improvement in quality through feedback mechanisms and a culture of learning.
- Adherence to industry standards, certifications, and rigorous quality control processes.

4. Environmental Responsibility

- Integration of eco-friendly practices to minimize the environmental footprint.
 - Compliance with environmental regulations and participation in sustainability initiatives.
 - Regular assessments of the environmental impact of our operations.

5. Client-Centric Approach

- Understanding and exceeding client expectations through open communication and collaboration.
- Tailoring services to meet the specific needs of each client.
- Prompt response to client feedback and concerns to ensure satisfaction.

6. Innovation and Continuous Improvement

- Embracing technological advancements and fostering a culture of innovation.
 - Investment in the continuous development of our team to stay at the forefront of industry advancements.
- Regular review and incorporation of innovative methodologies to enhance efficiency.

7. Workplace Diversity and Inclusion

- Promotion of a diverse and inclusive workplace that values differences and fosters equal opportunities.
 - Zero tolerance for discrimination, harassment, or any form of unfair treatment.
 - Ongoing initiatives to cultivate a culture of respect, openness, and collaboration.

Conclusion



At New Era Steel Structure, our commitment to excellence extends beyond the quality of our products to encompass the well-being of our team, the satisfaction of our clients, and our responsibility to the environment. Upholding this code of conduct, adhering to our meticulous methodology, and leveraging advanced capabilities, we strive for nothing short of perfection in every project we undertake.

**Elevate your projects with New Era Steel Structure ‘
Where Precision Meets Innovation**



CERTIFICATIONS AND ACCREDITATION

الرقم الموحد : ٧٠٠٢١٨٤١٤٦
رقم المنشأة : ٤٠٣٠٦٠٣٠٨١
التاريخ : ١٤٣٩/٠٤/٢١ هـ

شهادة تسجيل الشركة

Company Registration Certificate

وزارة التجارة
Ministry of Commerce

الاسم التجاري للشركة : شركة التاريخ الجديد للصناعات المعدنية
نوعها : ذات مسؤولية محدودة
مدة الشركة : ٣٠ سنة
مركزها الرئيسي : ٤٠٠٢٧ ، الشرفية ، ٦٤٥١
هاتف : ٠١٢٦٠٥٢٢٢٧
النشاط : للاطلاع على بيانات الأنشطة الرجاء مسح الرمز التجاري
رأس المال : ١.٠٠٠.٠٠٠ ريال سعودي
المديرون : 1 ياسر يوسف محمد ناغي
2 اسامه محمدا مين حمزه صيرفي
3
4
5
6
7
8
9
10
11
12
13
14
15
سلطات المدير/المديرون : حسب ما نص عليه عقد الشركة
يشهد مكتب السجل التجاري بمدينة جدة : بأنه تم تسجيل الشركة المذكورة أعلاه بمدينة جدة :
وتنتهي صلاحية الشهادات في : ١٤٤٦/٠٨/٢٦ هـ بموجب الإيصال رقم : ٢٤٠٣٢٢٠٨٤٦٧٤ وتاريخ : ١٤٤٥/٠٩/١٧ هـ

To Verify The Information Of This Certificate Visit <http://mc.gov.sa> يمكنكم التحقق من صحة هذه الشهادة بالدخول على <http://mc.gov.sa>
+966 11 294 4444 | الرياض 11162 | Kingdom of Saudi Arabia | المملكة العربية السعودية | www.mc.gov.sa | [MCgovSA](https://www.facebook.com/mc.gov.sa) | [MCgovSA](https://www.instagram.com/mc.gov.sa) | [MCgovSA](https://www.youtube.com/mc.gov.sa)



ترخيص منشأة صناعية

وزارة الصناعة
والثروة المعدنية
Ministry of Industry and Mineral Resources

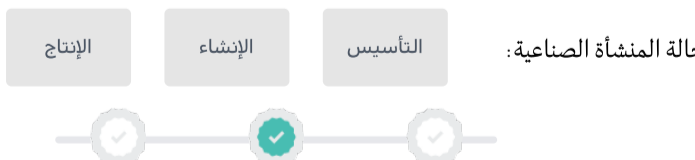


رقم الترخيص الصناعي:	4 512 276 9 8	تاريخ الإصدار:	20 24 - 0 1 - 15	تاريخ الانتهاء:	20 25 - 0 1 - 15
رمز المنشأة الصناعية:	10 0 14 0 3 2	الرقم الموحد:	70 0 2 18 4 14 6		
اسم المنشأة الصناعية:	شركة التاريخ الجديد للصناعات المعدنية				
عنوان المنشأة الصناعية:	غير محدد				

اسم السجل التجاري:	شركة التاريخ الجديد للصناعات المعدنية				
عنوان السجل التجاري:	جدة 0 0 27 جدة 6 4 51-21391				
رقم السجل التجاري:	4 0 3 0 6 0 3 0 8 1	نوع السجل التجاري:	ذات مسؤولية محدودة	رأس المال:	1,000,000



للاطلاع على تفاصيل الأنشطة الاقتصادية والمنتجات المرخصة، والبيانات التفصيلية، والشروط والمتطلبات؛ يرجى مسح الرمز الإلكتروني



وزارة الصناعة والثروة المعدنية

بندر بن إبراهيم الخريف

Proof Number	1049715475	رقم الإثبات
Original Date	15/5/2024	تاريخ الإصدار
Expiration Date	11/11/2024	تاريخ الانتهاء



إثبات عنوان Address Proof

Address Holder Details

بيانات صاحب العنوان

Name	شركة التاريخ الجديد للصناعات المعدنية	الاسم
Customer Acc.	3 1 3 0 0 0 9 0 1 1 6	رقم الحساب
Reg. Date	25/1/2024	تاريخ التسجيل

Address Details

تفاصيل العنوان

Short Address	J J I A 3 1 5 6	العنوان المختصر
Building No.	3 1 5 6	رقم المبنى
Street	Al Qasim Al Jawhari	الشارع
Secondary No.	6 7 0 0	الرقم الفرعي
District	Industrial Area	الحي
Postal Code	2 2 4 2 7	الرمز البريدي
City	JEDDAH	المدينة
	جدة	
	Kingdom of Saudi Arabia	المملكة العربية السعودية



للتحقق To Verify

<https://proof.address.gov.sa/VerifyProofNA.aspx>

تم إصدار هذا الإثبات إلكترونياً ولا يتطلب التوقيع عليه

تم إصدار هذا الإثبات بناءً على طلب الموضح أعلاه، ويحظر قطعياً تغييره أو إدخال أي تعديلات عليه سواء بالإضافة أو الحذف، وبعد الإثبات لغياً إذا شابه شيء من ذلك، كما يعرض صاحبه للمسائلة القانونية.

This proof has been issued electronically and does not require a signature

This proof has been issued upon the request of the above-named, and it is absolutely prohibited to imitate it or make any modifications to it, whether by addition or deletion, and the proof is considered void if it is marred by something, and its owner is subject to legal accountability.

19992 <https://spionline.com.sa/ar/national-address-1/>

TIN	3121752148	الرقم المميز
Certificate No.	100241104936559	رقم الشهادة
Certificate date	23/04/2024	تاريخ الشهادة

هيئة الزكاة والضريبة والجمارك
Zakat, Tax and Customs Authority

المملكة العربية السعودية
Kingdom of Saudi Arabia

شهادة تسجيل في ضريبة القيمة المضافة VAT Registration Certificate

تشهد هيئة الزكاة والضريبة والجمارك بأن المكلف أدناه مسجل في ضريبة القيمة المضافة بتاريخ ٢٠٢٤/٠٤/٢٣
The Zakat, Tax and Customs Authority certifies that taxpayer below is VAT registered on 23/04/2024 AD

Taxpayer Name	شركة التاريخ الجديد للصناعات المعدنية	اسم المكلف
VAT Registration Number	312175214800003	رقم التسجيل الضريبي
Effective Registration Date	2024/05/01	تاريخ نفاذ التسجيل
Taxpayer Address	جدة، حي النسيم، 22427 Jeddah	عنوان المكلف
CR / License Contact / ID No	4030603081	رقم السجل التجاري / الرخصة / العقد / الهوية
Tax Period	ربع سنوي - Quarterly	الفترة الضريبية
First Filing due date	2024/07/31	تاريخ استحقاق أول إقرار ضريبي

ملاحظة: كملكيين مسجلين في ضريبة القيمة المضافة، لا يجوز لكم تحصيل ضريبة القيمة المضافة من عملائكم قبل تاريخ نفاذ التسجيل في الضريبة، وفي حال تبين غير ذلك ستقوم هيئة الزكاة والضريبة والجمارك بتنفيذ الغرامات المستحقة

Note: As a VAT registered taxpayer, you are not allowed to collect VAT from your customers prior to the effective date of the tax registration. If otherwise approved, The ZAKAT, Tax and Customs Authority will impose the applicable penalties



zatca.gov.sa 19993 @zatca_sa



هذه الوثيقة مستخرجة من النظام الآلي ولا تحتاج إلى توقيع ولا يعتد بهذه الشهادة إلا بعد التحقق من موقع الهيئة www.zatca.gov.sa

TIN	3011640782	الرقم المميز
Certificate No.	100231094064378	رقم الشهادة
Certificate date	25/08/2017	تاريخ الشهادة

هيئة الزكاة والضريبة والجمارك
Zakat, Tax and Customs Authority

المملكة العربية السعودية
Kingdom of Saudi Arabia

قائمة فروع المكلف List of Taxpayer Branches

المدينة City	اسم الفرع Branch Name	رقم سجل تجاري / رخصة / عقد CR / License / Contract Number
جدة Jeddah	شركة التاريخ الجديد للصناعات المعدنية	4030603081



zatca.gov.sa 19993 @zatca_sa



هذه الوثيقة مستخرجة من النظام الآلي ولا تحتاج إلى توقيع ولا يعتد بهذه الشهادة إلا بعد التحقق من موقع الهيئة www.zatca.gov.sa

شهادة Certificate

The Zakat, Tax and Customs Authority certifies that the Taxpayer

تشهد هيئة الزكاة والضريبة والجمارك أن المكلف /

شركة الأول في الشرق الأوسط للألمنيوم المحدودة

Entry Unified No./ID No

٧٠٠١٧٠٦١

الرقم الموحد للشاشة / رقم هوية

Commercial Registration/License/ Contract No

٤٠٣٠٦٠٣٠٨١

سجل تجاري / رخصة / عقد رقم

Has submitted his tax return for the period ending on 31/12/2023 AD, and he was granted the certificate to complete all his transactions including the payment of the final amount due on the contract

قدم إقراره عن الفترة المنتهية في ٣١/١٢/٢٠٢٣ هـ، وقد منح هذه الشهادة لإنهاء جميع معاملاته بما في ذلك صرف مستحقاته النهائية عن العقود.

The Certificate is valid until 02/11/1446 AH corresponding to 30/04/2025 AD

يسري مفعول هذه الشهادة حتى تاريخ ٠٢/١١/١٤٤٦ هـ الموافق ٣٠/٠٤/٢٠٢٥ م

(The second of Dhul al-Qi'dah one thousand four hundred forty-six Hijri)

(الثاني من ذو القعدة ألف وأربعمائة وستة وأربعون هجري)

لا يعتد بهذه الشهادة إلا بعد التحقق من موقع الهيئة الإلكتروني: www.zatca.gov.sa
This certificate is not valid until verified by the Authority's Website: www.zatca.gov.sa

zatca.gov.sa 19993 @zatca_sa



هذه الوثيقة مستخرجة من النظام الآلي ولا تحتاج إلى توقيع ولا يعتد بهذه الشهادة إلا بعد التحقق من موقع الهيئة www.zatca.gov.sa

QIWA
قي

الموارد البشرية
والتنمية الاجتماعية

شهادة التوطين

رقم الشهادة	140506-15183935
تاريخ الإصدار	04/08/2024
تاريخ انتهاء الصلاحية	02/11/2024
تاريخ التجديد/التحديث	—
حالة الشهادة	تم التحقق
اسم المنشأة	شركة التاريخ الجديد للصناعات المعدنية
رقم المنشأة	9-2097111
رقم السجل التجاري	4030603081
رقم المنشأة الموحد	7002184146
مستوى نطاقات	اخضر متوسط
معدل التوطين	16%



The Ministry of Human Resources and Social Development certifies that the above mentioned Establishment has achieved the required Saudization rate and has been granted this certificate upon request.

تشهد وزارة الموارد البشرية والتنمية الاجتماعية بأن المنشأة المذكورة أعلاه حققت نسبة التوطين المطلوبة وتم منحها هذه الشهادة بناءً على طلبها.

The certificate is electronically generated and approved by the authority. It does not require any signature or stamp.

الشهادة تم إنشاؤها إلكترونياً ومعتمدة من الجهة المختصة ولا تحتاج إلى ختم أو توقيع.

رؤية
2030
المملكة العربية السعودية
KINGDOM OF SAUDI ARABIA

شهادة إشتراك

Membership

البوابة الموحدة
للغرف السعودية



نشهد بأن

شركة التاريخ الجديد للصناعات المعدنية

NEW ERA STEEL STRUCURE

عضو في الغرفة التجارية

Certificate Date	06/05/2024 - 27/10/1445	تاريخ طباعة الشهادة
Date of Membership	-	تاريخ الإشتراك
Date of Expiry	25/02/2025 - 26/08/1446	تاريخ الانتهاء
Subscription Status	فعال	حالة الإشتراك
NUN	7002184146	رقم المنشأة الموحد
Membership No	282125	رقم الإشتراك
Membership Degree	الثانية	درجة الإشتراك
Commercial Record/ License	4030603081	الرخصة / السجل التجاري
P. O. Box	11716	صندوق البريد

التوقيع
محمد أحمد العطاس
مدير إدارة شؤون المشتركين



Certificate
Excellence Award

New Era Company for Steel Structure

OCTOBER
2023

Valid for 3 years
Certificate No. 00238
www.asousa.org

ACCREDITATION

New Era Company for Steel Structure

This certificate has been granted upon the decision of American Standardization Organization for effective implementing of the **Quality Control Management System**

ASO : QCMS : 1 / 2020

Certificate No. QCMS 2020262	country Kingdom Of Saudi Arabia
Date of accreditation	10October 2023
Certificate expiry	9October 20 26

www.asousa.org

AMERICAN STANDARDIZATION ORGANIZATION

director

ACCREDITATION

New Era Company for Steel Structure

This certificate has been granted upon the decision of American Standardization Organization for effective implementing of **Occupational Health & Safety Management System**

ASO : OHSMS : 1 / 2020

Certificate No. OHSMS 2020258	country Kingdom Of Saudi Arabia
Date of accreditation	10October 20 23
Certificate expiry	9October 20 26

www.asousa.org

AMERICAN STANDARDIZATION ORGANIZATION

director

ACCREDITATION

New Era Company for Steel Structure

This certificate has been granted upon the decision of American Standardization Organization for effective implementing of the quality **Customer Satisfaction Assurance Management System**

ASO : CSAMS: 1 / 2021

Certificate No. 2021238	country Kingdom Of Saudi Arabia
Date of accreditation	10October 2023
Certificate expiry	9October 20 26

www.asousa.org

AMERICAN STANDARDIZATION ORGANIZATION

director

Certificate of Registration

This is to certify that Quality Management System of

New Era Company for Steel Structure

KSA - Jeddah -Industrial Zone - Postal Code: 23216

is in accordance with the requirements of the following standard

ISO 9001:2015

(Quality Management System)

SCOPE

Steel Structure Fabrication
(IAF Code: 17)

Certificate Number : 101023019645

Initial Registration Date : 10-Oct-2023
1st Surveillance Date : 10-Sep-2024
2nd Surveillance Date : 10-Sep-2025
Certificate Expiry Date : 09-Oct-2026

To verify certificate, visit at :
www.arscert.com
<https://uafaccreditation.org>
<https://www.iafcertsearch.org/>

Issued by ARS Assessment Private Limited

Managing Director

UAF Address : 400, North Center Dr, STE 202, Norfolk, VA 23502, United States of America :

This certificate remains the property of ARS and must be returned to ARS on Cancellation or Suspension of the certificate. Validity of the certificate is subject to successful completion of surveillance audits. Further clarification regarding the scope of this certificate and the applicability of standard may be obtained by consulting the Organisation on info@arscert.com

Certificate of Registration

This is to certify that Environmental Management System of

New Era Company for Steel Structure

KSA - Jeddah -Industrial Zone - Postal Code: 23216

is in accordance with the requirements of the following standard

ISO 14001:2015

(Environmental Management System)

SCOPE

Steel Structure Fabrication
(IAF Code: 17)

Certificate Number : 101023029646

Initial Registration Date : 10-Oct-2023
1st Surveillance Date : 10-Sep-2024
2nd Surveillance Date : 10-Sep-2025
Certificate Expiry Date : 09-Oct-2026

To verify certificate, visit at :
www.arscert.com
<https://uafaccreditation.org>
<https://www.iafcertsearch.org/>

Issued by ARS Assessment Private Limited

Managing Director

UAF Address : 400, North Center Dr, STE 202, Norfolk, VA 23502, United States of America :

This certificate remains the property of ARS and must be returned to ARS on Cancellation or Suspension of the certificate. Validity of the certificate is subject to successful completion of surveillance audits. Further clarification regarding the scope of this certificate and the applicability of standard may be obtained by consulting the Organisation on info@arscert.com

Kamal A. Hour
CONSULTING ENGINEERS

تاريخ : 1445/10/12 هـ
الموافق : 2024/04/21 م

إلى من يهمه الامر

نحن / مكتب كمال عباس نور للاستشارات الهندسية
بإذن السادة / شركة التاريخ الجديد للصناعات الحديدية ومقرها 7540
شارع محمد المحتسب حي الرويس - جدة أنها أحد مقاولي المنشآت المعدنية
المعتمدة لدينا في تصميم وتصنيع وتركيب مباني المنشآت المعدنية , وأنها
أسند اليها سابقا مشاريع من طرفنا عددها 8 مشاريع في مدينة أبحر شمال
مدينة جدة وتقع هذه المشاريع علي كورنيش أبحر بالتعاون مع مؤسسة خليج
أبحر لإدارة المرافق ويمثلها السيد طلال بن حمزة بن عبدالوهاب المنسي .
وهذه شهادة منا بذلك ،،

مكتب كمال عباس نور
للإستشارات الهندسية

للإستشارات الهندسية
ترخيص رقم ٧٩٨

Head Office : Jeddah - Lic. No. 798 I.C.C. 31597 - Tel. Fax P.O.Box 20911 Jeddah 21465 - Saudi Arabia

خبراء التصميم للإستشارات الهندسية
Design Experts Engineering Consulting

إلى من يهمه الامر

نحن / شركة خبراء التصميم للإستشارات الهندسية
بإذن السادة / شركة التاريخ الجديد للصناعات الحديدية ومقرها 7540 شارع محمد المحتسب حي الرويس -
جدة أنها أحد مقاولي المنشآت المعدنية المعتمدة
لدينا في تصميم وتصنيع وتركيب مباني المنشآت المعدنية المعتمدة لدينا في
تصميم وتصنيع وتركيب مباني المنشآت المعدنية , وأنها أسند اليها سابقا مشاريع
من طرفنا عددها 10 مشاريع في المدينة الصناعية الثالثة بجدة
وهذه شهادة منا بذلك ،،

شركة خبراء التصميم للإستشارات الهندسية

س.ت. : 4030280460 - رقم الترخيص : 2584 - هاتف : +966 12 2755500
Kingdom of Saudi Arabia - Jeddah - Al Batairi St. - Mob: 0505600101
المملكة العربية السعودية - جدة - طريق المدينة الثالث - جوال : 0505600101
Kingdom of Saudi Arabia - Jeddah - Down Al-Madinah Rd - Mob: 0504060554
البريد الإلكتروني : info@khukara-de.com

Certificates And Accreditation



Prequalification FOR Civil Works (New ERA Group Company)



Transmittal No.: T97-ICAD-GEN-TRN-020			
Contractor			
Responsibility	Name/Title	Signature	Date
Submitted By:	Islam		1/23/2022
	Engineer		
Review By:	Sijith (QA/QC)		1/23/2022
	Ahamed Sharqawi (Proj. Manager)		
Approved By:	Saadi Alrabeed		1/23/2022
	Senior Project Manager		
Supervision Consultant			
Received By:		(stamp/date/signature)	
Approved By:			

PREQUALIFICATION	
Subcontractor / Supplier:	New ERA Group
Scope of Work:	<p><u>CIVIL Works.</u></p> <ul style="list-style-type: none"> ➢ Design of civil works. ➢ Dewatering. ➢ Excavation and Backfilling. ➢ Concrete Works. ➢ Shoring ➢ Waterproofing
Location:	Outdoor Bathroom

PREQUALIFICATION APPROVAL REQUEST			
Project:	MAKKAH CITY EXPERIENCE CENTER	Ref No.:	01100-ZAZ-PQL-00076
Project No.:	01100-ZAZ01	Rev. No.:	01
Client:	ROSHN	Submittal:	Structural
Engineer:	LACECO	Purpose/Use:	For Approval
		Contractor:	Zuhier A. Zahran & Co.
PREQUALIFICATION DESCRIPTION			
Description	Documents of New Era Construction for Structural Steel Framing (Structural Steel structure, Stainless steel handrail, Perforated metal mesh, checkered plate, cat ladders)		Company Name: New Era Construction
Project Name:	Makkah City Experience Center	Contract Ref:	
Attachments:	<input checked="" type="checkbox"/> GOSI Zakat Saudization Certificate Ministry of Commerce Chamber of Commerce <input type="checkbox"/> SASO Specified Lab Tests Certificate Technical Catalog Other Certificates (ISO, etc.) <input type="checkbox"/> Certificate of Original Warranty Certificate		
MANUFACTURER DETAILS		SUPPLIER DETAILS	
Company Name:	New Era Construction	Company Name:	FAMECO
Address:	Jeddah, K.S.A	Address:	Jeddah, K.S.A
Discipline/Trade	Structural	Specification:	
Project Name:	Makkah CEC Building: CEC Building	BOQ Ref. No.:	05 12 00 (A, B, C, D, E, F, G, H, J, K, M, N, O, P, Q, R, S, T) 05 50 00 (A, B, E, F, G)
For the Contractor: Name: Aijaz Ahmed Khan Signature: Date: 10-08-2023			
ENGINEER REVIEW			
Remarks:			
Name: _____ Signature: _____ Date: _____			
Status Code: <input type="checkbox"/> Approved (A) <input type="checkbox"/> Approved with Comments (B) <input type="checkbox"/> Review & Resubmit (C) <input type="checkbox"/> Rejected (D)			
PM REVIEW			
Name: _____ Signature: _____ Date: _____			
RE Comments:		CLIENT'S APPROVAL (If Required) <input type="checkbox"/> Yes <input type="checkbox"/> No	
Remarks:		Remarks:	
Name: _____ Signature: _____ Date: _____		Name: _____ Signature: _____ Date: _____	

PREQUALIFICATION APPROVAL REQUEST			
Project:	MAKKAH CITY EXPERIENCE CENTER	Ref No.:	01100-ZAZ-PQL-00076
Project No.:	01100-ZAZ01	Rev. No.:	01
Client:	ROSHN	Submittal:	Structural
Engineer:	LACECO	Purpose/Use:	For Approval
		Contractor:	Zuhier A. Zahran & Co.
PREQUALIFICATION DESCRIPTION			
Description	Documents of New Era Construction for Structural Steel Framing		Company Name: New Era Construction
Project Name:	Makkah City Experience Center	Contract Ref:	
Attachments:	<input checked="" type="checkbox"/> GOSI Zakat Saudization Certificate Ministry of Commerce Chamber of Commerce <input type="checkbox"/> SASO Specified Lab Tests Certificate Technical Catalog Other Certificates (ISO, etc.) <input type="checkbox"/> Certificate of Original Warranty Certificate		
MANUFACTURER DETAILS		SUPPLIER DETAILS	
Company Name:	New Era Construction	Company Name:	FAMECO
Address:	Jeddah, K.S.A	Address:	Jeddah, K.S.A
Discipline/Trade	Structural	Specification:	
Project Name:	Makkah CEC Building: CEC Building	BOQ Ref. No.:	05 12 00 (A, B, C, D, E, F, G, H, J, K, M, N, O, P, Q, R, S, T) 05 50 00 (E, F)
For the Contractor: Name: Aijaz Ahmed Khan Signature: Date: 20-07-2023			
ENGINEER REVIEW			
Remarks:			
- All Government Certificate should be Updated and Valid before supplying Material			
- Factory visit should be arranged for final approval.			
Name: Samer Albaz Signature: Date: 20-07-2023			
Status Code: <input type="checkbox"/> Approved (A) <input type="checkbox"/> Approved with Comments (B) <input type="checkbox"/> Review & Resubmit (C) <input type="checkbox"/> Rejected (D)			
PM REVIEW			
Name: _____ Signature: _____ Date: _____			
RE Comments:		CLIENT'S APPROVAL (If Required) <input type="checkbox"/> Yes <input type="checkbox"/> No	
Remarks:		Remarks:	
Name: _____ Signature: _____ Date: _____		Name: _____ Signature: _____ Date: _____	

Certificates And Accreditation



Transmittal of Documents & Samples

Date: 24-Jan-22
Transmittal Ref.: T97-CAD-GEN-TRN-020
Transmittal Rev.: 0

Project No. & Title: T97-Obhur Chahd
Package no.:

Employer:

To: ahmad.gabal@dar.com
Cc: Moath.Alem@parsons.com, Matt.Sampson@parsons.com

We are transmitting herewith the listed below documents / samples, for the indicated necessary action:

1. Subject Description: Architectural Civil Electrical
 Structural Mechanical Low Current
 Landscape Others

2. Area of Application:

3. Transmittal Details:

#	Ref.	Rev.	Date	Type (1)	Copies	Submit (2)	Action (3)	Description
1	N/A	0	1/24/2022	Soft Copy	1			Prequalification for Civil Works (New ERA Group Company)

Submitted by: Mr. Saadi Alrasheed (For Contractor) Signature: _____

4. Engineer's Reviewer Comments (attach comments sheet if needed):
New ERA Group Company prequalification is generally accepted from technical point of view for concrete, excavation and backfill works only. Code "B" Approved as noted.
The attached subcontractor prequalification documents are not including any experience certificate in design, dewatering, shoring and waterproofing field. In case subcontractor shall perform fit-out items by external other subcontractors then, he should submit prequalification of subcontractors for approvals. The approval is subject to acceptance of subcontractor performance on site, complete approvals from PMC and CPPA, complete submitting all missing registration certificates and financial position shall be checked by concerned consultant.

Name: _____ (Reviewer) Signature: _____ Date: _____

5. Engineer's Representative Comments:
Name: _____ (For Engineer) Signature: _____ Date: _____

Approval shall not relieve Contractor of his liabilities under the Contract or constitute authorization of any change to Contract Documents.

Form Ref. TMO DQ RUH (F4) Rev.1 Page 1 of 1

King Fahd Bin Abdulaziz University, King's College Hospital, Jeddah

DAR International Engineering Consultancy

FAITHFUL+GOULD Member of the SNC-Lavalin Group

PREQUALIFICATION SUBMITTAL

Ref. No.: KCH-GEN-SP-PRO-S-GA-047 Rev 00 Date: 2022-01-24

Architectural Electrical Civil Furniture/Equipment
 Structural Mechanical Interior Design others

Description*: Prequalification submittal for M/s New ERA Group (For Structural Steel Works) Manufacturer: M/s New ERA Group Supplier: N/A No. of Catalogue/Sample: N/A Code: N/A

* Description: (Manufacture, Model, Type, Size, Colour, etc.)
 Catalogue Drawing Sample Certificate Calculation Document

Having checked this submittal, we certify that it conforms to the requirements of the Contract Documents in all respects, except as otherwise indicated herein.

Sr. QA/QC Engineer: _____ Project Manager: _____

Received by: _____ Date: _____ Name & Signature of Consultant: _____

Remarks / Comments:

Status: A Approved C Revise & Resubmit, Work shall not proceed N No Action
B Approved as noted D Rejected - Resubmit

Engineer: _____ Resident Engineer: _____ Faithfull & Gould
Date Name & Signature Name & Signature Date Name & Signature

DAR-SP-Form-002 Rev.0

25/09/21

VENDOR/ SUPPLIER PREQUALIFICATION CHECKLIST

Vendor Name: Prequalification for M/S NEW ERA

SN	REQUIREMENTS / DETAILS TO BE SUBMITTED BY VENDOR	TO BE FILLED BY SHAPOORJI	
		YES	NO
1	Prequalification Form duly filled by Vendor	<input type="checkbox"/>	<input type="checkbox"/>
2	Company Profile	<input checked="" type="checkbox"/>	<input type="checkbox"/>
3	Compliance statement for each item in the specification	<input checked="" type="checkbox"/>	<input type="checkbox"/>
4	Latest & Valid Business Registration Certificate	<input checked="" type="checkbox"/>	<input type="checkbox"/>
5	Latest & Valid Chamber of Commerce Registration Certificate (for LOCAL Vendor/Supplier Only)	<input checked="" type="checkbox"/>	<input type="checkbox"/>
6	Latest & Valid GOSI Certificate (for LOCAL Vendor/Supplier Only)	<input checked="" type="checkbox"/>	<input type="checkbox"/>
7	Latest & valid ZAKAT Certificate (for LOCAL Vendor/Supplier Only)	<input checked="" type="checkbox"/>	<input type="checkbox"/>
8	Latest & Valid Saudization Certificate (for LOCAL Vendor/Supplier Only)	<input type="checkbox"/>	N/A
9	Latest & Valid Netaqat Certificate (for LOCAL Vendor/Supplier Only)	<input type="checkbox"/>	N/A
10	Bank Information to include the IBAN Number	<input checked="" type="checkbox"/>	<input type="checkbox"/>
11	Period of existence in the line of business	<input checked="" type="checkbox"/>	<input type="checkbox"/>
12	Details of major clients and their details	<input checked="" type="checkbox"/>	<input type="checkbox"/>
13	List of high value projects carried out	<input checked="" type="checkbox"/>	<input type="checkbox"/>
14	Supplies made with the total value of each project and the corresponding year	<input checked="" type="checkbox"/>	<input type="checkbox"/>
15	Copies of project completion / satisfactory supply completion certificate from clients	<input checked="" type="checkbox"/>	<input type="checkbox"/>
16	If Management System certified company or required, then copies of valid certificates are required.	<input type="checkbox"/>	N/A
17	EHSS requirements related to risk associated with services offered.	<input type="checkbox"/>	N/A
18	Bank Recommendation Letter/Certificate If it is Manufacturing unit then provide details of manufacturing facility, list of machinery, equipment etc.	<input type="checkbox"/>	N/A
19	Finance stability and audited accounts	<input checked="" type="checkbox"/>	<input type="checkbox"/>
20	List of manpower available	<input checked="" type="checkbox"/>	<input type="checkbox"/>
21	Any pending legal action against which will affect the going concern of business	<input type="checkbox"/>	N/A
22	FAT certificates and standard test reports(country of origin, certified agency, etc) .	<input type="checkbox"/>	N/A

Note: This form must be at the first page. Provide all requirements, prepare and arrange in one box file as per the arrangement order. Place a label in each requirements.

Review by: _____
Signature: _____
Date: _____

DAR-SP-FORM-028 REV.1

15/12/21

SIMPLEX

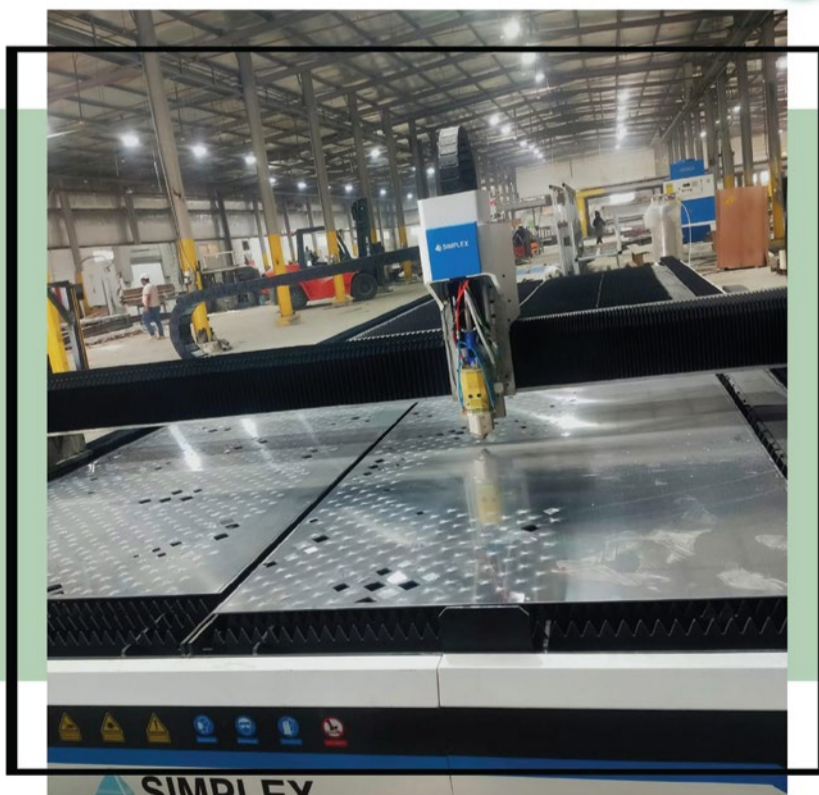


زيارة فريق صيانة سيمبلكس لمصنع التاريخ للمعادن لتسليم
ماكينة فايبر ليزر 12 كيلوات بمساحة تشغيل 12*3م
المملكة العربية السعودية - جدة

[/SimplexCnc](#) [Simplexarabia.com](#)

+966 54 947 3781 ++966546860983 +966567726713

SIMPLEX



زيارة فريق صيانة سيمبلكس لمصنع التاريخ للمعادن لتسليم
ماكينة فايبر ليزر 12 كيلوات بمساحة تشغيل 12*3م
المملكة العربية السعودية - جدة

[/SimplexCnc](#) [Simplexarabia.com](#)

+966 54 947 3781 ++966546860983 +966567726713

NSS

التاريخ الجديد للصناعات المعدنية
NEW ERA STEEL STRUCTURE

CONTACT US

 +966 12 655 7073  info@newerasteel.com

SAUDI ARABIA - JEDDAH

FACTORY : FIRST INDUSTRIAL CITY 1 , ZONE 5 .

WEBSITE : NEWERASTEEL.COM